



Become a Kit Partner



Charity Number 1189375



Hi, I'm Steph,
CEO and
Founder
of Gympanzees.

We are opening a UK-first facility for disabled children and young people, but to make this centre fully accessible and achieve life-changing health benefits for 200,000 visitors a year, we need to fund over **350 pieces of highly specialised equipment at a value of £1m.**

Who is this equipment for?

We support children and young people with severe physical and learning disabilities, as well as those who are neurodiverse or have sensory, behavioural, and communication disabilities. Since 2018, we have hosted 165 days of Pop Ups at Special Schools, during the summer and Easter breaks, welcoming over 28,000 visitors with over 100 different disability types. Securing feedback at each, we have honed our plans and proved the need for a permanent site. The kit we are planning to purchase is so varied and specialised that the Gympanzees Centre will also cater for adults, such as those with learning disabilities or adults going through rehabilitation after having a stroke. The possibilities are endless!

Our equipment is designed for 2 main reasons.



To provide
exercise



To provide a
varied sensory
experience



Why is it needed?

- There are over **90,000** disabled children and young people from **0-25** within an hour of Bristol and **1.5 million in the UK**.
- **77% of disabled young people** cannot access mainstream sports and leisure.
- Limited access to therapy exacerbates that they are **half as likely** to exercise as their non-disabled peers.
- **Exercise** is essential for:
 - Developing **movement skills** (e.g., sitting, walking, self-care, writing).
 - **Reducing or delaying pain** (80% of those with Cerebral Palsy develop chronic joint pain by 21).
 - **Maintaining lung health** for immobile individuals, improving long-term well-being.
- **80% of our visitors** have **sensory** difficulties, experiencing either heightened or dulled sensations.
- A neurodiverse child who hears too much may struggle in noisy environments, leading to **overwhelm and shut down**.
- Many wheelchair users lack **sensory awareness in their legs**, similar to a "dead arm" feeling after sleeping on it.
- Our equipment provides **tailored sensory input**, helping children:
 - Learn new skills
 - Move and communicate
 - Focus and concentrate
 - Feel calm, happy, and engaged



“There is a difference between your children being tolerated and celebrated, but here it is so clear they are celebrated.”

Becoming a Kit Partner

This document outlines just some of the many items of kit that will help transform the lives of disabled children and young people through exercise, play and socialisation.

Unless specified otherwise, any money raised will be used in an unrestricted capacity to support the overall Project Home Appeal.

As a valued '**Kit Partner**', you have the power to make a real difference to this project and the children and families we support. This is a **UK-first** and we want you to be part of it.

You'll see a range of '**Kit Partner**' levels, each with inspiring examples of how your generosity will help bring the Gympanzees Centre to life. We offer a wide range of recognition packages to acknowledge your support, and look forward to discussing these with you in more detail.

Your support will directly contribute to creating a space where every child can thrive and their lives transformed.

“In a place like this, you can leave worries at the door - I don't feel isolated! Can't put into words how important this is for us.”



Bronze Kit Partner - £5,000 - £15,000

Example - Swing Package - £7,000

The Swing Package brings joy, movement, and therapy to all ages. With 10 therapeutic swings and 6 ceiling attachments, it offers endless ways to swing, spin, bounce, and relax.

More than just fun, these swings help children with severe disabilities build strength, improve balance, and explore new sensory experiences. For neurodiverse children, gentle motion fosters improved focus, communication, and mood.

This package isn't just equipment—it's freedom, comfort, and a gateway to new possibilities.

Scan or click to
learn more!



Equipment in action! (inspired by real moments at Gympanzees)

Seb arrives at Gympanzees, feeling overwhelmed—new environments are always a challenge for him. But then he discovers the **hug swing**. Wrapped in its comforting embrace, his **anxiety eases**, and for

the first time, he feels safe enough to **connect with others and make friends**.

Ellie has spinal rodding and has never experienced the thrill of a swing. She must stay flat, and standard basket swings don't accommodate her needs. But on the **platform swing**, she finally gets to move on her own—gently rocking herself with her feet, experiencing **freedom and independence** she's never had before.



Bronze Kit Partner - £5,000 - £15,000

Examples of where your support could go

Cardio Wall	£7k	Interactive exercise wall. 9 pods mounted on a wall. Pods light up depending on the game chosen, and visitors hit the pod with their hands or arm extenders (for wheelchair users), balls or weights. The Cardio Wall is a great way to exercise alone or with another person.
NuStep T4R	£8k	This is a fully inclusive recumbent cross trainer adapted for those with physical disabilities. It allows those with difficulties in legs or arms or one-sided difficulties to exercise safely.
Safespace	£9k	A space to get away from excess stimulation and relax. Giving visitors a chance to calm down and regulate before returning to the more active spaces.
Interactive Sandbox	£12k	A sandbox with projected games and visuals. Using a depth perception monitor, the scenes change as visitors build-up or dig down.
Lift for soft play	£14k	A wheelchair-accessible lift to take wheelchair users and carers to the top of the slide that is inside of soft play – giving everyone, no matter their disability, access to slide.

Discover the equipment!



Silver Kit Partner - £15,000 - £25,000

Example - Interactive Climbing Wall - £20,000

Scan or click to
learn more!



Our Climbing Wall, measuring 11 meters in length and 2.5 meters in height, provides a safe and accessible sideways climbing experience for individuals of all abilities—no ropes needed!

On the left side, closely spaced holds assist children with tight muscles in stretching and moving comfortably. As they move to the right, the challenges become greater, featuring wider gaps and protruding elements. This design is ideal for energetic climbers and those with sensory processing needs, as it helps promote self-regulation.

An interactive wall projector adds fun, turning climbing into a game! And for those unable to support their weight, a hoist system ensures everyone can experience the joy of movement.

This isn't just a climbing wall—it's adventure, confidence, and play for all.

Equipment in
action! (inspired by
real moments at Gympanzees)



Three-year-old Emmy has cerebral palsy, and **her physio encourages her to stretch** by walking sideways. She used to spend hours on stair rails, bored and frustrated. At Gympanzees, she's be able to practice on the **climbing wall**, where **therapy feels like play** - and her parents proudly watch her progress with every step.

Brothers Tommy and Reggie, both autistic, **struggle to get along**, making home life turbulent. After visiting Gympanzees, their parents installed a climbing wall at home. **Now, they eat together, play, and sleep peacefully**—a transformation that once felt impossible.



Silver Kit Partner - £15,000 - £25,000

Examples of where your support could go

<p>Kitting out a changing place</p>	<p>£18k</p>	<p>Changing places are accessible toilets and showers for those who wear incontinence pads or nappies and are too big to fit on baby changing tables or for those who need help getting on and off a toilet. The severe lack of changing places in public places is a key reason for disabled people not being able to access community settings.</p>
<p>ORA + Sphere</p>	<p>£20K for ORA +</p>	<p>An interactive animated sphere with projected images that can be manipulated by touch. Visitors can play with the sphere from a wheelchair or from standing. The sphere is highly visually stimulating as well as being interactive, it will be used in our reception area to help keep children who struggle with queues entertained.</p>
<p>FES Bike</p>	<p>£23k</p>	<p>An arm and leg bike with functional electrical stimulation (a treatment that uses electrical impulses to stimulate muscles and improve movement.)</p>

Discover the equipment!



Gold Kit Partner - £25,000-£50,000

Example - Hoists for all the activity rooms - £50k

30% of our visitors use wheelchairs, and many struggle to access mainstream leisure equipment. However we will have ceiling track hoists in every room will allow them to easily transfer onto our specialist equipment, providing inclusion, independence, and new opportunities for movement and new sensory experiences.



Equipment in action! (inspired by real moments at Gympanzees)

Ryan, a teenager who is a **wheelchair user**, has never been able to get onto a trampoline due to mobility issues—until now. **Thanks to Gympanzees' hoists**, he can finally **bounce freely**, feeling the joy and health benefits for the first time.

Phoebe, using the hoist to **access the Super Surfer scooter**, races down the ramp, experiencing speed and **adrenaline for the first time**.



Gold Kit Partner - £25,000-£50,000

Examples of where your support could go

<p>LiteGait 800 with GaitKeeper S22 Therapy Treadmill</p>	<p>£29k</p>	<p>A therapeutic treadmill with a supportive frame holds non-mobile young adults in a standing position, allowing them to practice walking safely.</p>
--	-------------	--

Discover the equipment!



<p>Alter-G Neo</p>	<p>£40k</p>	<p>This rehabilitation treadmill enables zero-gravity walking, allowing visitors who can't bear weight to move their legs freely and experience walking or running.</p>
---------------------------	-------------	---



sports-medical.co.uk/alterg-treadmills/alterg-neo

Platinum Kit Partner - £50,000 - £100,000

Example - Innowalk - £55k

The Innowalk is a revolutionary cross-trainer for children with severe physical disabilities. The individual is moved into a standing position and their legs are then guided into walking motion — this is often their first-ever experience of walking and aerobic exercise.



For many, this means deep breaths for the first time. When resting, we only use the top 10% of our lungs and the other 90% is reserved for when we are exercising. We collect sputum in our lungs, which catch viruses and bacteria, which we then expel by coughing. If we don't take deep breaths, we are less able to move and loosen this sputum and are much more likely to catch infections. Those with severe physical disabilities are not able to exercise in everyday life and so don't take deep breaths and are, therefore, most likely to catch infections, which can be life-limiting. The Innowalk helps disabled children exercise and take deep breaths, improving lung health. It also eases stiffness, builds strength, improves digestion, and enhances core stability.

Despite its life-changing benefits, the Innowalk is rarely available, but Gympanzees will have at least two, ensuring more children can experience the freedom of movement.

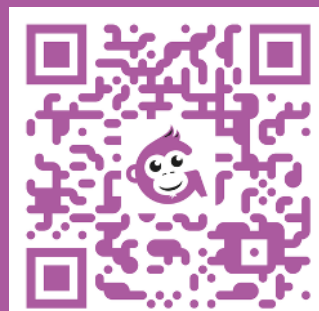
Equipment in action! (inspired by real moments at Gympanzees)

After 3 months with the **Innowalk**, **Caleb gained head control**, transforming his world from staring at his lap to truly engaging with everything around him.

Dan, who cannot take steps covered 6km in the Innowalk — and still didn't want to stop!



Scan or click to learn more!



Platinum Kit Partner - £50,000 - £100,000

Examples of where your support could go

<p>Two-Storey Soft Play</p>	<p>£77k</p>	<p>Get ready for an inclusive adventure like no other! This two-story soft play structure is designed for everyone to enjoy, with a fully wheelchair-accessible ground floor and a lift that ensures wheelchair users can join in on the thrill of the slide. Built tall enough for adults to join the fun, the design also features carefully placed play elements, making it easy for those with limited mobility to explore, climb, and play with confidence!</p>
<p>Kit out the Kitchen</p>	<p>£80k</p>	<p>The kitchen will be fully accessible to meet the needs of disabled kitchen staff. The kitchen will serve 130 covers in the café.</p>
<p>Inclusive Hex Quad</p>	<p>£80k</p>	<p>A magical, elevated wooden play space designed for all, with smooth ramps welcoming wheelchair users to join in the adventure. Twisting slides, sensory wonders, and endless opportunities for discovery await! The Hex Squad will spark curiosity, encouraging every child to move, explore, and play without limits.</p>



By becoming a Kit Partner, you're not just funding equipment but transforming lives. Your support will give thousands of disabled children and adults the chance to move, play, and thrive.

“Normally it's not as fun to do exercise. We would normally be given a list of stuff to do from their physio which can be quite boring, but this is a fun way to do exercise and keep active, normally quite hard to keep them active in the holidays when there is not as much stuff on for them to do. As it is safe and they are not overwhelmed by other children, they can relax and just focus on having fun.”



Get in Touch!

If you would like to discuss partnering with us or making a donation to the project, we would be delighted to speak with you and explore the benefits and recognition we can provide in return. We'd love to chat about how you can help!



Jack Lewis
Director of
Fundraising

jack@gympanzees.org
07821435612



Leilah King
Business
Development
Manager

leilah@gympanzees.org
07875761107



Jenny Davies
Fundraising Officer

jen@gympanzees.org
07792675829



Hannah Penfold
Fundraising
Assistant

hannah.penfold@gympanzees.org

We've got a building, now you can help us make it a home!



Charity Number 1189375